

CHOMA

m u s e u m

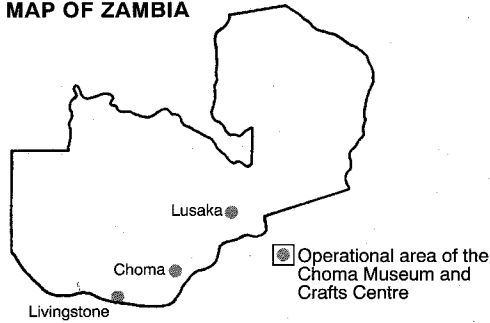


& crafts centre

CHOMA MUSEUM AND CRAFTS CENTRE (CMCC)

Choma Museum and Crafts Centre (CMCC) is situated in Choma, Southern Province of Zambia, 300 km from Lusaka and 200 km from Livingstone. The Museum and Crafts Centre is housed in an historical building, the former Beit hostel and school for girls. The building dates back to 1926 and is one of the oldest preserved buildings in Zambia.

MAP OF ZAMBIA



History of the CMCC

The CMCC originated in 1972 in the Gwembe Valley, as a crafts buying and selling activity of the German Gossner Mission. In 1987, the Society of the Gwembe Valley Tonga Museum and Crafts Project was formed. Soon after the Netherlands Government adopted the project.

Following a change from a local to a regional institution, the project moved from the Gwembe Valley to a more central location in Choma. Subsequently, the name was changed to the Choma Museum and Crafts Centre in order to better reflect the regional character of the institution.

At present, the Choma Museum and Crafts Centre consists of three autonomous divisions: Museum, Crafts Development and Crafts Trade, each one with its own objectives and sources of funding.

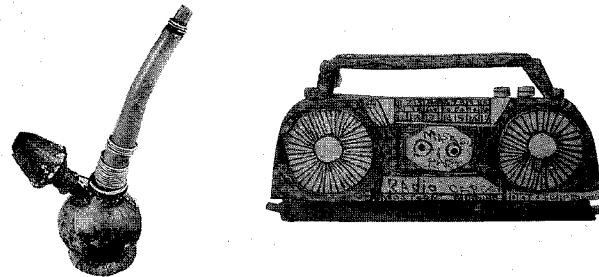


MUSEUM

The Choma Museum is the first regional museum in Zambia. It is financially supported by the Governments of Netherlands and Zambia, as well as by other sources of funding. The Museum's primary objective is to preserve and interpret the cultural heritage of Southern Province, which encompasses various traditions of African and non-African origin.

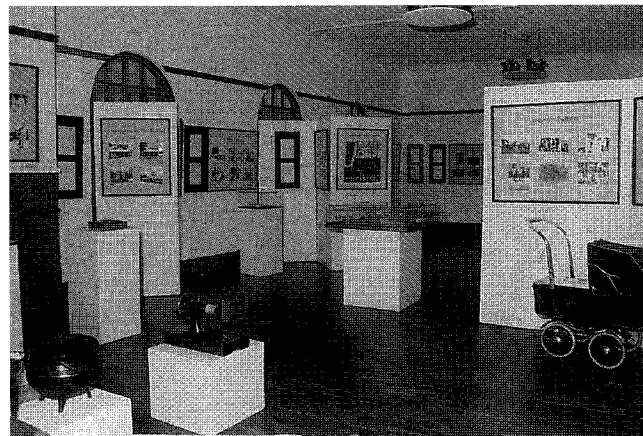
Collections

The Museum collection contains objects of historical and cultural significance. Among the Museum's holdings is the noteworthy collection, donated by the Gossner Mission, of 500 artefacts representing the material culture of the Valley Tonga. The Photographic Archives specializes in the collection of visual materials of regional significance.



Exhibitions

The Museum is a leading institution with innovative approaches towards presentation, and high standards of excellence. As a regional institution, it attempts to communicate comprehensive information about Southern Province. The Temporary Exhibitions Gallery features regularly changing displays on various subjects of interest to both the local population and tourists.



Commitment to Education

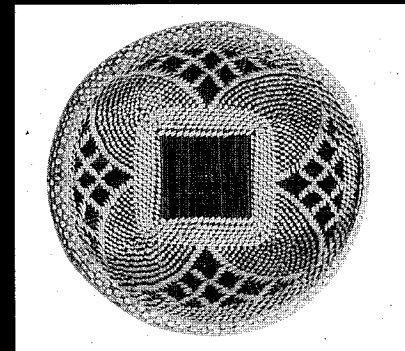
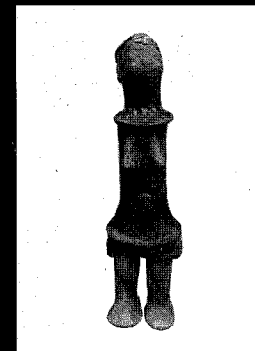
The Museum is a leading educational centre in the cultural field, offering a wide variety of programmes for youth and adults. Museum out-stations are being established with the aim of making the museum experience more accessible to the wider public. The Museum Club offers the chance for unemployed women to acquire practical artistic skills enabling them to earn an income. The Museum publishes a bi-annual newsletter, which is free of charge. For more information about museum activities contact the Curator.

CRAFTS DEVELOPMENT

The Crafts Development Programme is fully funded by the Netherlands Government. Its main objective is the development of crafts production in Southern Province, particularly in the Gwembe Valley, in order to improve income-generating opportunities for peasant farmers.

The aim of the Programme is to raise production of marketable crafts to a level which is self-sustaining, i.e. when the crafts producers receive a substantial part of their cash requirements and the operation pays for itself. A series of workshops has been organized to improve the quality and the quantity of the crafts. The focus is on the improvement of traditional techniques.

Attention is being paid to basketry, which is easily exportable. Palm leaves used in making baskets are grown in a pilot project. Crafts makers are encouraged to start their own palm gardens. For more information contact the Crafts Development Officer.



CRAFTS TRADE

Crafts Trade aims at the marketing of handmade, high quality products on a cost-covering basis. Its primary focus is on the promotion of the crafts industry in Southern Province. About 200 producers are associated with the Crafts Trade Division.

The shop sells crafts produced by women such as baskets, clay pots, clay dolls, animals and Tonga beadwork. It also supplies

typical products made by men, for example stools, wooden household utensils, iron implements and musical instruments. In order to satisfy the various tastes of our clients, the shop also retails crafts from other regions. For more information contact the Crafts Trade Manager.



Opening hours

The Choma Museum and Crafts Centre is open daily between 8 a.m and 5 p.m.

Admission

Free but donations are welcome. Upkeep of our premises is costly.

Parking

Safe parking within premises.

Tours

Contact Curator.

Shop

Handmade regional crafts, books, postcards, maps, souvenirs and other items are available. The Museum nursery offers decorative plants and trees for sale.

Coffee bar

The Coffee Bar offers coffee, tea and soft drinks.

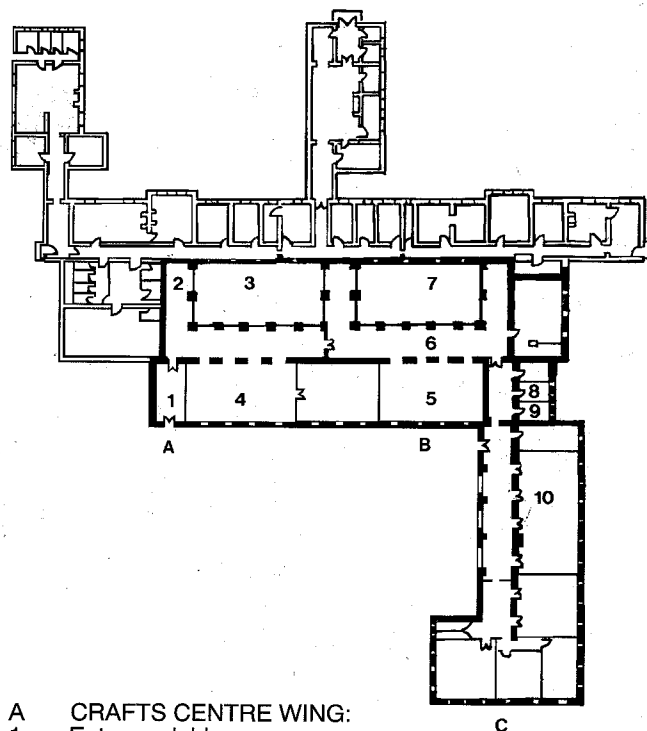
Photography

Personal photography and video filming is permitted but donations are welcome.

Visitors book

The CMCC welcomes remarks on the services provided as well as suggestions for new exhibitions and any improvements.

FLOOR PLAN OF THE CHOMA MUSEUM AND CRAFTS CENTRE



A CRAFTS CENTRE WING:

- 1 Entrance lobby
- 2 Coffee bar
- 3 Open courtyard
- 4 Crafts shop

B MUSEUM WING:

- 5 Permanent exhibition
- 6 Display corridor
- 7 Open courtyard
- 8-9 Toilets
- 10 Temporary exhibition gallery

C ADMINISTRATIVE WING

— Area occupied by CMCC

- - - Area occupied by Ministry of Education



P.O. Box 630189 Choma Zambia
Tel (032) 20394 Fax (032) 20352